

# ACCU-PRINT HIGH-TECH™ SERIES

## AIR PRESSURE SWITCH #GAO-SWAP09A

Instructions for the replacement of the air pressure switch (#GAO-SWAP03) on your Accu-Print Series press with updated switch model #GAO-SWAP09A: [\[Figure 1\]](#)

NOTE: Use only qualified personnel for all electrical, pneumatic, and mechanical installations, maintenance, and repairs.

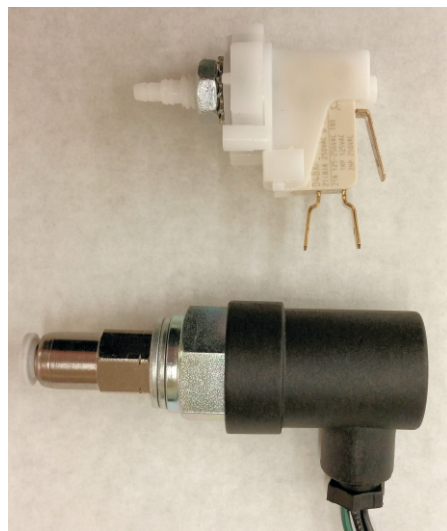
1. Make sure that all electrical and air supplies to the machine or system are OFF.
2. Disconnect the air line from the old air pressure switch.
3. Disconnect the two power supply wires from the old air pressure switch by removing the contacts from the spade terminals.
4. Remove the nut and washer securing the pressure switch to the machine base.
5. Remove the old pressure switch.
6. Cut the old contactors off the power supply wires and strip 1/8" of insulation from the end of each wire.
7. Insert the new air pressure switch [\[Figure 1\]](#). For most Accu-Print Series presses, the new switch will fit in the existing mounting hole. Some models may require slight modification; see [NOTE](#) below.
8. Use the supplied 3/8" fitting [\[Figure 2\]](#) to secure the new air pressure switch in place.
9. Connect the air supply line using the 1/4" quick-connect port.
10. Strip 1/8" of insulation from each of the two red wires on the new air pressure switch.
11. Connect the power supply lines using wire nuts.
12. Connect the green (ground) wire [\[Figure 3\]](#) on the new air pressure switch to Earth ground.

**NOTE:** If the existing mounting hole on your Accu-Print model press is too small to accommodate the new air pressure switch, the hole can be enlarged (drilled out) using an appropriately-sized drill bit. BEFORE MAKING ANY MODIFICATIONS, CHECK THAT THERE IS SUFFICIENT CLEARANCE AND THAT THE DRILL BIT WILL NOT CONTACT ANY ELECTRICAL LINES OR ENCLOSURES, OR ANY AIR LINES. If there is insufficient space available to enlarge the mounting hole, the new switch may be connected as per the above instructions and secured to the machine base with an adhesive Velcro pad or plastic cable tie.

For questions or technical assistance call Graphic Parts International at 773-725-4900 or email: [techsupport@gpiparts.com](mailto:techsupport@gpiparts.com).

G.P.I. is a premier manufacturer of replacement parts and provider of remanufacturing services for the screen printing industry.

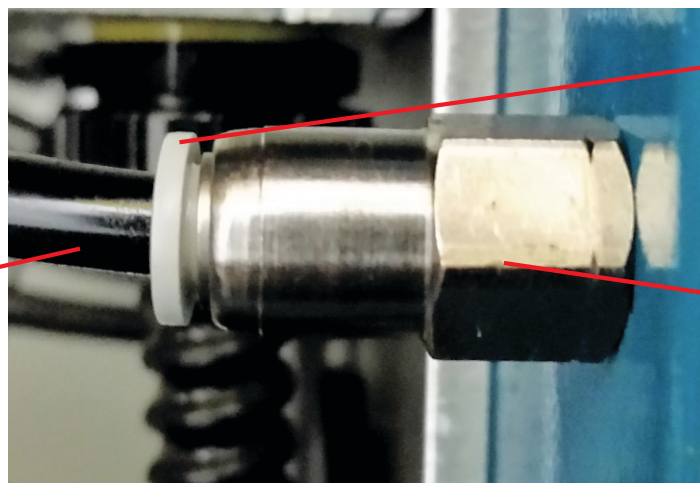
[Figure 1]



#GAO-SWAP03

#GAO-SWAP09A

[Figure 2]



Air line

1/4"  
quick-connect  
port

3/8" fitting

[Figure 3]



Ground wire