

VACUUM TABLES



G.P.I. Vacuum Tables For All Flatbed Applications



**Replacement Parts &
Remanufacturing Services
for the Screen Printer**



A Division of The A.W.T. World Trade Group
Chicago, IL 60641

www.gpiparts.com

Vacuum Tables

FOR ALL FLATBED APPLICATIONS



Vacuum tables fit on all domestic and foreign screen printing equipment and other flatbed applications:

- American
- M&R
- M&M
- SVECIA
- SIAS
- Thieme
- Lawso
- A.W.T.
- SPE
- Argon

Vacuum tables from G.P.I. are manufactured to meet the requirements of large-format automatic printers, one-man units and all other flatbed applications. They meet all OEM specifications for smooth, flat, long lasting production.

ADVANTAGES

- Perfectly flat surface—ideal for screen printing
- Non-rusting, non-oxidizing, anti-static and warp-resistant vacuum beds
- Designed to meet individual production requirements
- Aluminum honeycomb core for proper support and air flow
- A wide range of sizes, thicknesses and configurations to fit all applications
- Can be made to fit any manufacturers' equipment—domestic & foreign
- More than 30 years' experience in air flow and vacuum technology

OPTIONS

- Cut outs
- Lift pins
- Side or bottom ports
- Disappearing guides
- Stainless steel surface
- And more

G.P.I.'s industry-leading vacuum tables fit all screen printing presses from any manufacturer, or any other equipment where surface flatness is important.

The tables are available in a wide range of sizes and configurations with non-rusting, anodized aluminum or stainless steel vacuum tops and honeycomb insides for support and uniform air flow. Vacuum tables from G.P.I. are also anti-static and warp resistant.

The surface of G.P.I.'s standard vacuum tables are made from heavy-duty anodized aluminum to be perfectly flat, making them ideal for all screen printing applications.

G.P.I. individually designs machine or application specific requirements into each vacuum table. Aluminum vacuum tables have aluminum honeycomb cores. We can also make your table from stainless steel or whatever type of material your application requires.

Vacuum hose connector outlets and air flow ports are placed on the table according to your specifications. Disappearing guides, lift pins or slotted guides are customized to your requirements. Round or square registration guides with or without sleeves and/or air cylinders are placed on the table to your specifications.



A Division of The A.W.T. World Trade Group

4321 N. Knox Ave. • Chicago, IL 60641-1906 USA
800.444.PART (within the USA) • 773.725.4900 • Fax: 773.777.0909
parts@gpiparts.com • www.gpiparts.com

DESIGN AND APPLICATION OPTIONS

Engineered and Built to Your Specifications



Circular holddown pattern.



Unusual shape, with take-off cutouts and disappearing guides.



Recessed, pneumatically controlled rollers for easy removal of glass or other rigid panels .



Custom phenolic surface for non-conductive applications.



Lift pins and disappearing guides with camera well.



Table with cutouts designed for use with rigid panel transport system.



Slotted entrance and exit holdowns for specialty manufacturing needs.



Side mounted registration collar maximizes usable surface area.

Replacement Parts & Remanufacturing Services

Visit our web site: www.gpiparts.com



AIR FLOW VACUUM HOLDDOWN & BLOWBACK SYSTEMS

**Holds Flat and 3D Components in Place — Releases Material Easily
Reduces Scratching — Excellent for Applications Requiring Flotation**

G.P.I. has developed innovative air flow vacuum holddown and flotation systems for flat or 3D substrates, components and parts. This unique system incorporates blowback or flotation of parts. As a result, friction and static are reduced. This also minimizes scratching the part as it is removed from the vacuum system.

Mount these versatile vacuum holddown systems easily wherever it is needed. It is easily accessible for maximum control.

G.P.I. manufactures both manual and automated vacuum holddown & blowback systems. G.P.I. has all the parts required to assemble a complete vacuum system. Order using the part numbers listed below.

MANUAL VACUUM HOLDDOWN SYSTEMS

With the movement of a lever or a chain — depending on which system is selected — you control up to three settings: no-vacuum, vacuum holddown and optional blowback/flotation. Blowback flotation is achieved by simply adding an extra air hose connection.



Lever Release



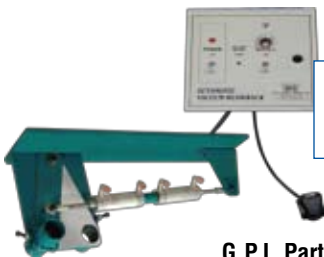
Chain Release

G.P.I. Part No	Air Hose Dia. (I.D.)
AFMB-125M-GPI	1-1/4"
AFMB-150M-GPI	1-1/2"
AFMB-175M-GPI	1-3/4"
AFMB-200M-GPI	2"
AFMB-300M-GPI	3"

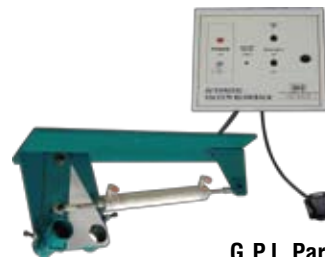
G.P.I. Part No	Air Hose Dia. (I.D.)
AFCB-125M-GPI	1-1/4"
AFCB-150M-GPI	1-1/2"
AFCB-175M-GPI	1-3/4"
AFCB-200M-GPI	2"
AFCB-300M-GPI	3"

AUTOMATIC VACUUM HOLDDOWN SYSTEMS

This G.P.I. system is complete with a foot pedal to make operation very easy to control. The on/off switch controls vacuum and blower. Blowback time can be preset to control length of cycle. Electric and compressor are required to operate the cylinders and foot pedal in this system. (115V, 1PH, 60HZ or 220V, 1 Ph, 50 Hz)



Vacuum/Blowback System with Air Cylinder & Foot Pedal



Vacuum System with Air Cylinder & Foot Pedal

G.P.I. Part No	Air Hose Dia. (I.D.)
AFAB-125M-GPI	1-1/4"
AFAB-150M-GPI	1-1/2"
AFAB-175M-GPI	1-3/4"
AFAB-200M-GPI	2"
AFAB-300M-GPI	3"

G.P.I. Part No	Air Hose Dia. (I.D.)
AFA-125M-GPI	1-1/4"
AFA-150M-GPI	1-1/2"
AFA-175M-GPI	1-3/4"
AFA-200M-GPI	2"
AFA-300M-GPI	3"



A Division of The A.W.T. World Trade Group

4321 N. Knox Ave. • Chicago, IL 60641-1906 USA
800.444.PART (within the USA) • 773.725.4900 • Fax: 773.777.0909
parts@gpiparts.com • www.gpiparts.com

Heavy-Duty Vacuum Hoses

Designed to Handle the Demands of Your System

G.P.I.'s heavy duty hoses and clamps complete your systems and are deigned to handle to demand- ing vacuum applications. Vacuum hoses come in

many standard sizes ranging from 1 1/4" to 3" but, as is the case with all G.P.I. products, custom sizes are also available.



Vacuum Hoses

G.P.I. Part No	Air Hose Dia. (I.D.)
GPIH125E	1-1/4"
GPIH150E	1-1/2"
GPIH175E	1-3/4"
GPIH40E	2"
GPIH3f	3"



Hose Clamps

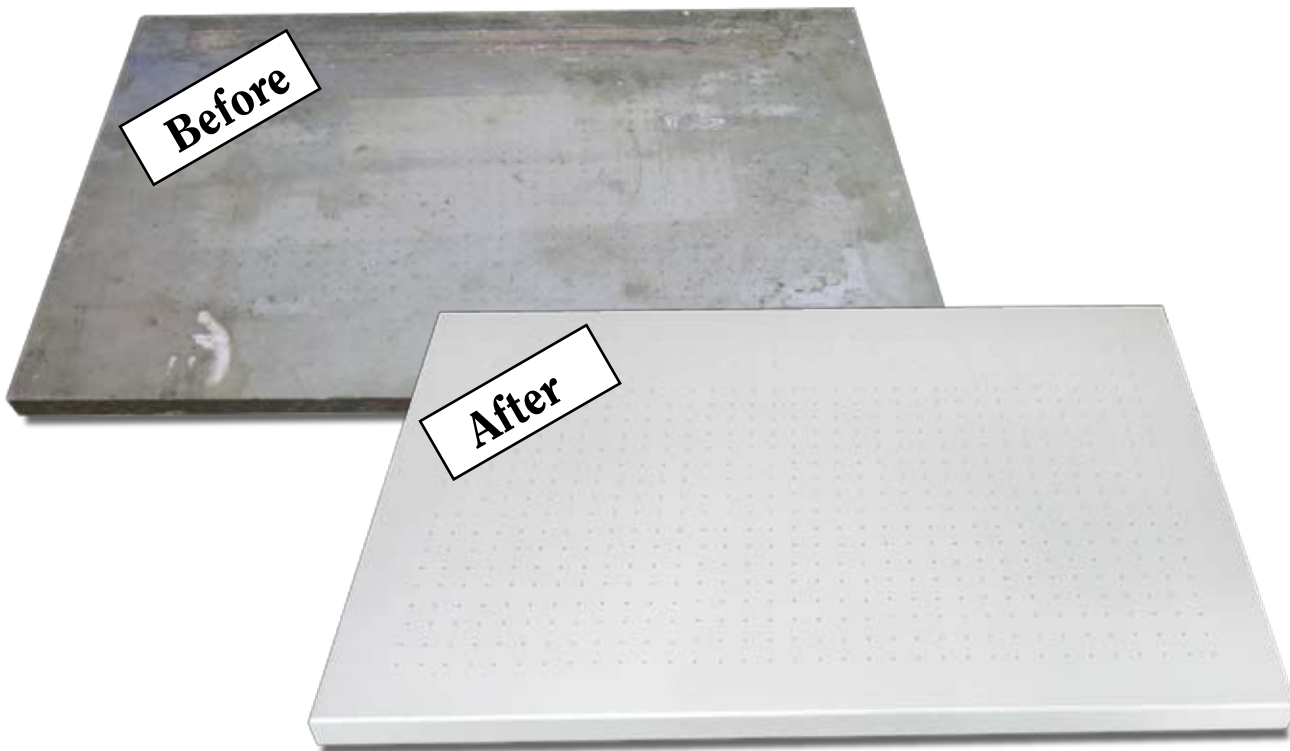
G.P.I. Part No	Air Hose Dia. (I.D.)
GPIMD1116114	1-1/4"
GPISLD34234	1-1/2"
GPIH175E	1-3/4 - 3"

Vacuum Table Rebuilding

Like new performance and appearance

For customers who want to upgrade their existing vacuum table without the expense of buying a new one, G.P.I. offers a full range of rebuilding services designed to keep costs down. Whether a table needs only resurfacing or is due for a complete overhaul, G.P.I. will restore the

original look and performance. Flatness, holddown, and airflow are all checked to ensure OEM specifications have been met, and with quick turnaround and great service, G.P.I.'s rebuilding services help keep production moving at the pace your business requires.



Replacement Parts & Remanufacturing Services
 Visit our web site: www.gpiparts.com



Quiet Vacuum Motors

Maintenance Free / Low Noise / Energy Efficient

Quiet Vacuum Motors

Designed and built from the inside out, our airflow management systems consistently meet the most demanding application requirements.

At their core, you'll find a carefully selected series of highly efficient vacuum motors that are the quietest in the industry. Tight tolerances between blades and blower housing create a deep vacuum, and the multi-stage centrifugal motor ensures that the proper volume of air is generated for precise hold-down. Brushless and maintenance free, these motors boast an impeccable safety record. Together with the table's honeycomb inside, they deliver just the right amount of air to a series of optimally spaced holes at the table's surface to lock materials into precise working position.

The quietest and most efficient airflow in the industry

Regardless of how complex your situation may be, our airflow specialists are up to the task. Zoned airflow, various hole sizes, and custom hole spacing are just a few of the customer requests we have successfully implemented. With the quietest and most efficient airflow in the industry, our vacuum tables keep things in place without fanfare or interruption.

Standard Features

- Sealed ball bearings never need lubrication
- More than 20,000 hours of continuous use
- Direct mount dynamically balanced impeller
- Low noise rating, 53.3 – 72.5 dB
- Multistage centrifugal design
- CFM range from 38 – 250
- 50 Hz /60 Hz operation
- Brushless and sparkless
- More than 50 styles to choose from
- Maintenance Free
- Minimal Vibration
- Energy efficient
- C.S.A. approved



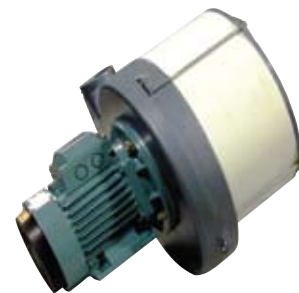
Multistage centrifugal design



Brushless / sparkless



Low noise rating



Energy efficient



A Division of The A.W.T. World Trade Group

4321 N. Knox Ave. • Chicago, IL 60641-1906 USA
800.444.PART (within the USA) • 773.725.4900 • Fax: 773.777.0909
parts@gpiparts.com • www.gpiparts.com

ORDER THE CORRECT VACUUM TABLE TO FIT YOUR NEEDS

To Order The Correct Vacuum Table:

1. Enter your table's specifications below using Figures 1, 2 and 3 or 4.
2. Fill out the contact information at the end of this 3-page form. Incomplete information can hinder the application process and slow down your request.
3. Either enter your information **online** at http://gpiiparts.com/Vacuum_Beds/index.php or **fax** this completed order form to:

G.P.I. Vacuum Table Order Department

Fax: 773.777.0909

Email: parts@gpiiparts.com

Note If the diagrams on this form do not fit your particular application, you may submit your own diagram. You must still complete the contact information portion of this form.

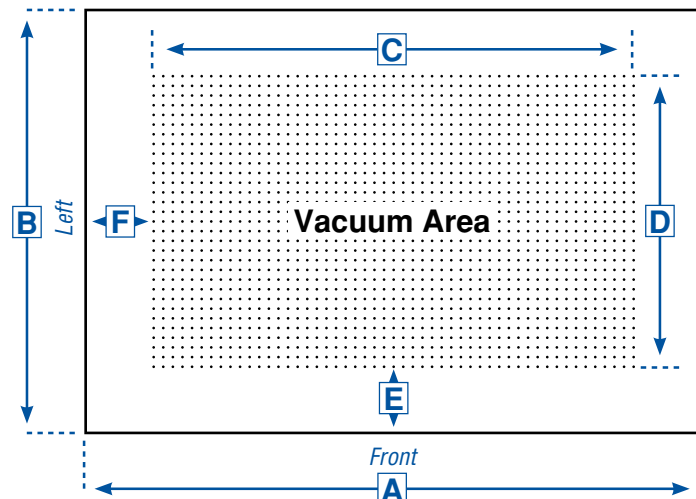


Figure 1. Top view of vacuum table.



Figure 2. Side view of vacuum table.

Note Vacuum tables are manufactured with **beveled** edges unless otherwise specified.

Note For tables requiring **cutouts** for grippers, please indicate on Figure 1 the approximate placement of all cutouts (see item J in the next column for additional information you will need to complete).

Vacuum Table Specifications

- A** Outside Dimension (front) _____ (in.) _____ (cm)
- B** Outside Dimension (side) _____ (in.) _____ (cm)
- C** Vacuum Area (front) _____ (in.) _____ (cm)
- D** Vacuum Area (side) _____ (in.) _____ (cm)
- E** Vacuum Area Placement (from front) _____ (in.) _____ (cm)
- F** Vacuum Area Placement (from left side) _____ (in.) _____ (cm)
- G** Table Thickness _____ (in.) _____ (cm)
- H** Inside Table (check one)
- Impregnated Corrugated Honeycomb
- Aluminum Honeycomb
- I** Table Top (check one)
- Anodized Aluminum
- Stainless Steel
- Other
- J** Gripper Cutout(s) Placement(s)
(circle whether dimensions will be in inches, centimeters or millimeters): (in.) (cm) (mm)
- Number of cutouts _____
- Dimension of cutouts (L) (W)
- Cutout(s) placement (from left side) _____ (in.) _____ (cm) _____ (mm)
- Cutout(s) placement (from front) _____ (in.) _____ (cm) _____ (mm)

Vacuum Connections

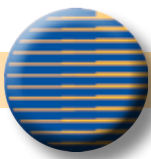
Use Figure 3 or 4 on next page to indicate approximate placement of vacuum connections.

Draw a circle(s) ○ to indicate the location(s) of the vacuum connection port(s).

If the port(s) is to be placed on the top of the table, write the word "TOP" inside Figure 3. If the port(s) is to be placed on the side of the bed, use Figure 4. Complete the information on the table that follows.

Replacement Parts & Remanufacturing Services

Visit our web site: www.gpiiparts.com



ORDER THE CORRECT VACUUM TABLE TO FIT YOUR NEEDS



Figure 3. Top view of vacuum table for port location(s). Port(s) will be placed on underside of table unless otherwise indicated.

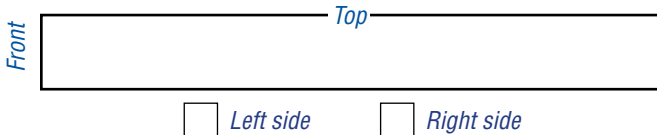


Figure 4. Side view of vacuum table for port location(s). Indicate left or right side

Number of connection port(s) _____
Diameter of connections port(s) _____
(in.) (cm)

IMPORTANT!

Vacuum hose connection ports are placed in the center of the underside of the vacuum table unless otherwise specified. The Vacuum Hose Connector uses a 1-1/4" I.D. diameter hose (the maximum size allowed on a 1-1/4" table). If you require a larger diameter connector, you must order a thicker vacuum table. Call G.P.I. for assistance.

Placement of Port(s)

(Complete the following section ONLY if you require precise placement of vacuum connections)

Port 1 Distance from left _____ (in.) _____(cm)
Distance from front _____ (in.) _____(cm)
Port 2 Distance from left _____ (in.) _____(cm)
Distance from front _____ (in.) _____(cm)
Port 3 Distance from left _____ (in.) _____(cm)
Distance from front _____ (in.) _____(cm)
Port 4 Distance from left _____ (in.) _____(cm)
Distance from front _____ (in.) _____(cm)

Disappearing Guides and Lift Pins

If your application requires disappearing guides and/or sliding (lift) pins, indicate their approximate locations in Figure 1 on previous page. Use G1, G2, G3, etc. for the guides and P1, P2, P3, etc. for the lift pins. Use the table below for precise placement:

Number of disappearing guides _____
Number of lift pins _____

Disappearing guides

Guide 1 Distance from left _____ (in.) _____(cm)
Distance from front _____ (in.) _____(cm)
Guide 2 Distance from left _____ (in.) _____(cm)
Distance from front _____ (in.) _____(cm)
Guide 3 Distance from left _____ (in.) _____(cm)
Distance from front _____ (in.) _____(cm)
Guide 4 Distance from left _____ (in.) _____(cm)
Distance from front _____ (in.) _____(cm)

If you require more than 4 guides, please continue adding locations on a separate sheet of paper.

Sliding (lift) pins

Pin 1 Distance from left _____ (in.) _____(cm)
Distance from front _____ (in.) _____(cm)
Pin 2 Distance from left _____ (in.) _____(cm)
Distance from front _____ (in.) _____(cm)
Pin 3 Distance from left _____ (in.) _____(cm)
Distance from front _____ (in.) _____(cm)
Pin 4 Distance from left _____ (in.) _____(cm)
Distance from front _____ (in.) _____(cm)

If you require more than 4 lift pins, please continue adding locations on a separate sheet of paper.

Be sure to complete the contact information on the next page and send all 3 pages of this Quotation / Order Form to G.P.I.



A Division of The A.W.T. World Trade Group

4321 N. Knox Ave. • Chicago, IL 60641-1906 USA
800.444.PART (within the USA) • 773.725.4900 • Fax: 773.777.0909
parts@gpiparts.com • www.gpiparts.com

IN ADDITION TO YOUR VACUUM TABLE SPECIFICATIONS, PLEASE INCLUDE THE FOLLOWING INFORMATION WHEN YOU SEND THIS FORM TO G.P.I.

YOU MAY FAX THE FORM TO 773.777-0909 OR EMAIL IT TO PARTS@GPIPARTS.COM:

Mr. Ms.

Name _____ Email _____

Company _____ Title _____

Address _____

City _____ State _____ Zip Code _____

Telephone _____ _ext _____ Fax _____

Web site _____

Please recommend an airflow and blowback system.

Please recommend a vacuum motor.

Additional Information / Notes

THE A.W.T. WORLD TRADE GROUP

***Your Complete Manufacturing Source for
Screen Printing Equipment, Supplies & Parts***

Building on more than 30 years experience in serving clients in the graphic, textile and industrial markets, A.W.T. World Trade provides screen printers with a complete manufacturing source for prepress and printing supplies, machine parts, and remanufactured equipment.

Experience shows that when printers use a single manufacturing source, costly incompatibility problems between equipment lines and suppliers are greatly reduced. A.W.T. develops complete systems that work efficiently and economically to avoid printing errors, reduce downtime, and keep you profitable.

Our technical sales staff will make sure you choose the right system for your company's needs, delivering the performance you require at a cost within your budget. Industry experts in both technical support and service will confidently walk you through the setup and installation process for maximum productivity right from the start.

The A.W.T. World Trade Group was formed in 2002 when A.W.T. World Trade Inc. and Graphics Parts International Inc. purchased American Screen Printing Equipment.



**A.W.T.
World Trade Inc.**

www.awt-gpi.com



**American
M&M**

www.screenprintmachinery.com



**GRAPHIC PARTS
INTERNATIONAL INC.**

www.gpiparts.com

CORPORATE HEADQUARTERS AND MANUFACTURING FACILITY

A.W.T. World Trade Inc.

4321 N. Knox Avenue,
Chicago, IL 60641 USA

773.777.7100 • Fax: 773.777.0909

sales@awt-gpi.com

SALES AND DISTRIBUTION

Serving the Eastern U.S., Central and South America

A.W.T. World Trade Inc.
8984 N.W. 105th Way, Medley, FL 33178 USA
305.887.7500 • Fax: 305.887.2300

floffice@awt-gpi.com • www.awt-gpi.com

EUROPEAN SALES AND DISTRIBUTION

A.W.T. World Trade Europe BV
Xenonstraat 80, 1362 GH Almere, Holland
+(31)(0)(36)536.0873 • Fax: +(31)(0)(36)536.0626

info@awt-europe.com • www.awt-europe.com

For an A.W.T. dealer near you, contact:

